



# PRODUCT MANUAL

✉ [contact@dunloptyres.co.in](mailto:contact@dunloptyres.co.in)

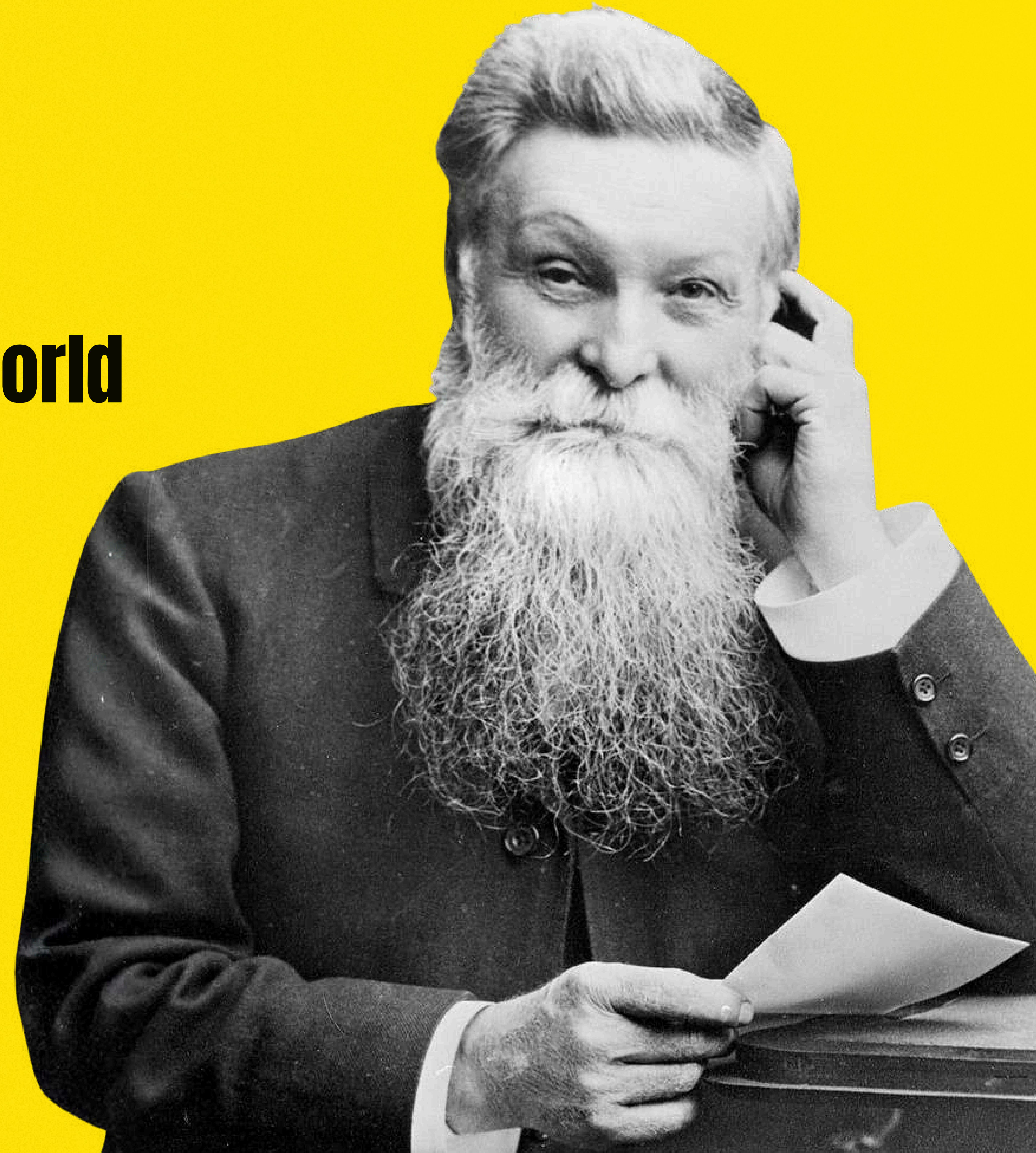
☎ +91 7044074250





## Dunlop - an idea that moved the world

John Boyd Dunlop noticed how his son stumbled with his bicycle over cobbled streets. In 1888, when pneumatic tires didn't exist, Dunlop was the first to develop an air-cushioning system for his son's tricycle tires. He wrapped its wheels in thin rubber sheets, glued them together and inflated them with a football pump. Later, he patented and commercialized his invention as Dunlop Pneumatic Tire Co. Ltd. In 1890, Dunlop opened its first tire plant in Dublin and its first factory in Birmingham, UK, marking the onset of commercial production of Dunlop tires.

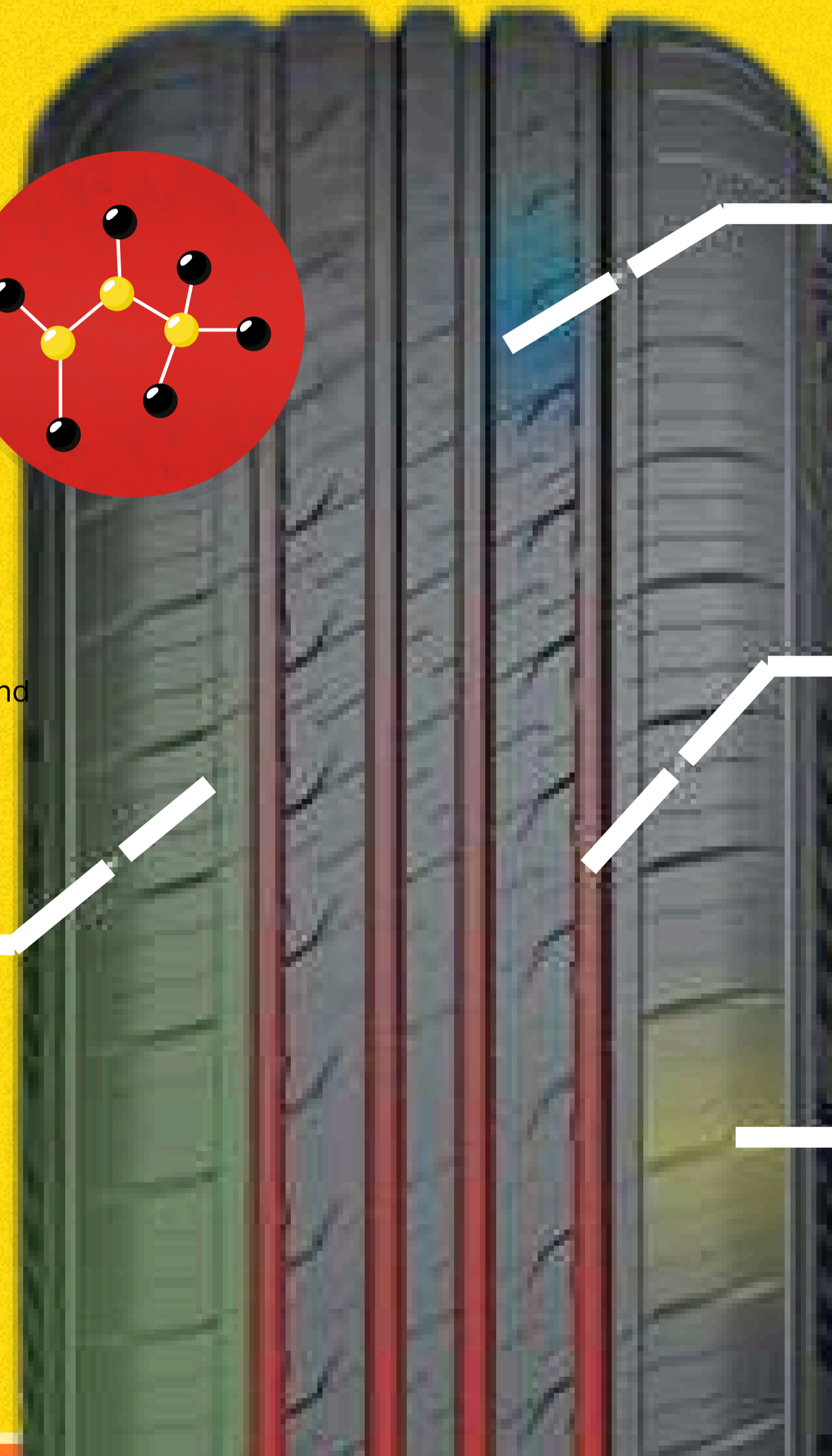




# Passenger Car Radial Tyre

# ROADTRAK

ECONOMICAL & DURABLE



**WEAR-RESISTANT & FUEL-EFFICIENT**

**New Generation High Wear-resistant, Low Rolling Resistance Formula**

Effectively reduces internal heat generation and rolling resistance, balancing wear resistance and fuel efficiency, offering extended mileage and greater economic durability.

**NOISE REDUCTION**

**Modular Air Circulation**

Real-time analysis and simulation optimise configuration and real-time command, reducing losses from troubleshooting, and achieving efficient quietness.

**STABLE GRIP**

**Easy-to-reach Emergency Device**

Static cockpit capability, improved test force and stability, with better operational performance.

**WET ROAD SAFETY**

**Four Longitudinal Grooves**

Offers excellent drainage performance, ensuring safer high-speed driving on wet roads.

**Optimized Design of Lateral Tread Grooves**

The inner side of the lateral grooves is designed narrower to reduce air noise, while the outer side is designed wider to enhance wet performance.

# ROADTRAK

ECONOMICAL & DURABLE



SIZE	L.I. & S.R.	STANDARD RIM (IN.)	PRESSURE (KPA)	UTQG
155/65R13 *	73T	4.50B	300	420/A/A
165/70R13	79T	5.00B	300	420/A/A
165/70R13	79H	5.00B	300	420/A/A
165/70R14 *	81T	5J	300	420/A/A
175/65R14	82H	5J	300	420/A/A
175/65R14	86TXL	5J	340	420/A/A
175/65R14	86HXL	5J	340	420/A/A
175/70R14	84T	5J	300	420/A/A
175/70R14	84H	5J	300	420/A/A
185/60R14	82H	5½J	300	420/A/A
185/65R14	86T	5½J	300	420/A/A
185/65R14	86H	5½J	300	420/A/A
185/70R14	88T	5½J	300	420/A/A
185/70R14	88H	5½J	300	420/A/A
195/60R14 *	86H	6J	300	420/A/A
185/60R15	84H	5½J	300	420/A/A
185/60R15	88HXL	5½J	340	420/A/A
185/65R15	88T	5½J	300	420/A/A
185/65R15	88H	5½J	300	420/A/A
195/55R15	85V	6J	300	420/A/A
195/60R15	88H	6J	300	420/A/A
195/65R15	91H	6J	300	420/A/A

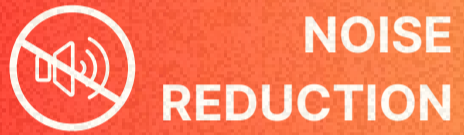
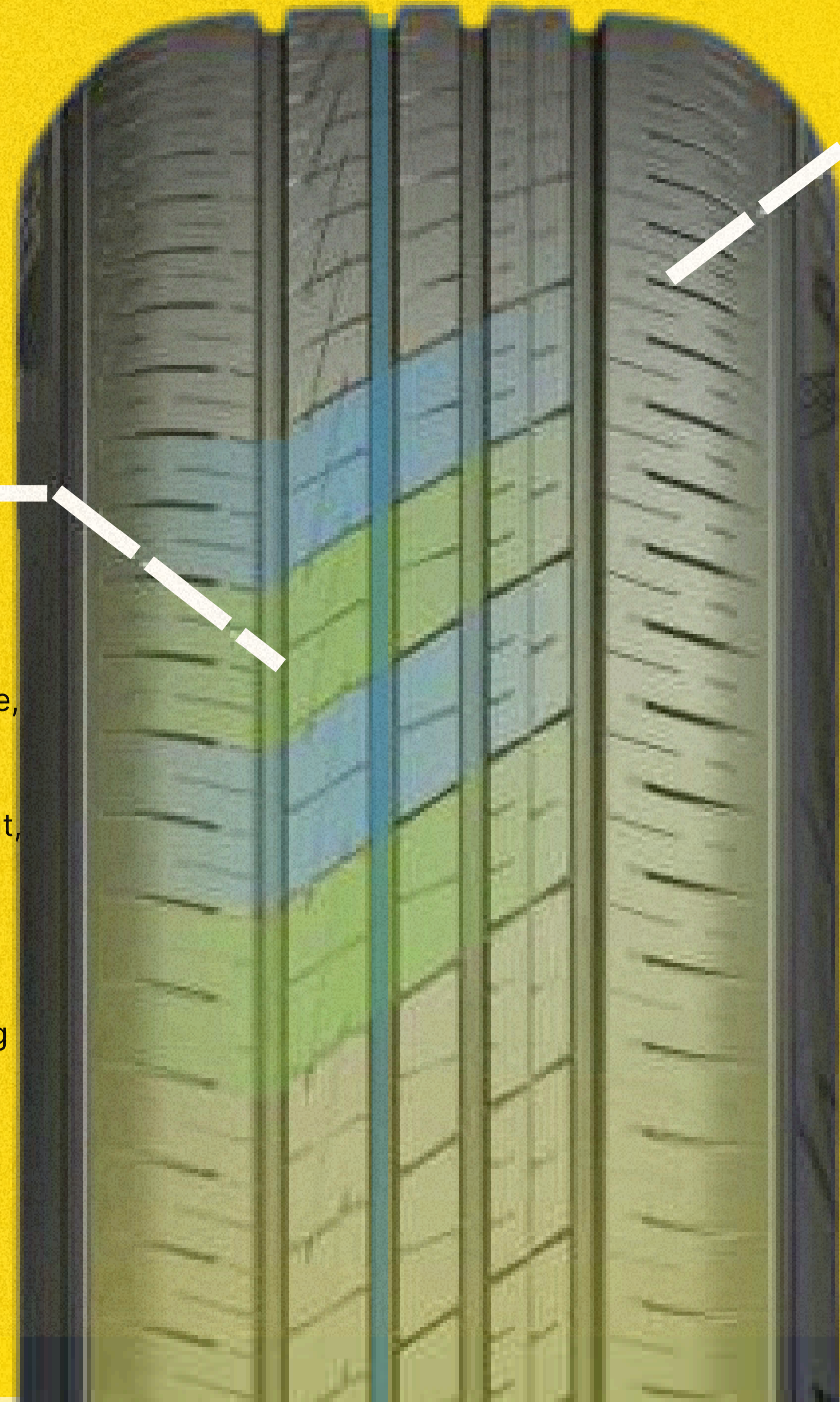
**ECONOMICAL & DURABLE**

SIZE	L.I. & S.R.	STANDARD RIM (IN.)	PRESSURE (KPA)	UTQG
205/65R15	94H	6J	300	420/A/A
205/70R15 *	96H	6J	300	420/A/A
215/70R15 *	98H	6½J	300	420/A/A
195/55R16 *	87V	6J	300	420/A/A
195/55R16 *	91VXL	6J	300	420/A/A
195/60R16	89H	6J	300	420/A/A
205/55R16	91V	6½J	300	420/A/A
205/55R16	91W	6½J	300	420/A/A
205/55R16	94WXL	6½J	340	420/A/A
205/60R16	92H	6J	300	420/A/A
205/60R16	92V	6J	300	420/A/A
205/65R16 *	95H	6J	300	420/A/A
215/55R16	93V	7J	300	420/A/A
215/55R16	97WXL	7J	340	420/A/A
215/60R16	95V	6½J	300	420/A/A
215/60R16	99VXL	6½J	340	420/A/A
215/65R16	98H	6½J	300	420/A/A
225/55R16	99VXL	7J	340	420/A/A
225/55R16	99WXL	7J	340	420/A/A
225/60R16 *	98V	6½J	300	420/A/A
225/60R16 *	102HXL	6½J	300	420/A/A

\* means products under development.

# TRAK GRIP

QUIET & COMFORTABLE



### Leading Quadruple Noise Reduction Technology

Low rolling resistance profile, asymmetric variable pitch quiet pattern, computer-optimized pitch arrangement, and combined sipes design fully balance tyre rigidity, effectively reducing resonance noise and enhancing driving and riding comfort.

FUEL-EFFICIENT & ECONOMICAL



### Environmentally Friendly Materials Compliant with REACH Regulations

Low fuel consumption, better fuel economy.

ENVIRONMENTALLY FRIENDLY



### Excellent Energy-saving Technology

Reduces carbon emissions, more environmentally friendly.

**TRAK GRIP**  
QUIET & COMFORTABLE



## QUIET & COMFORTABLE

SIZE	L.I. & S.R.	STANDARD RIM (IN.)	PRESSURE (KPA)	UTQG
175/60R13 *	77T	5.00B	300	380/A/A
175/60R13 *	77H	5.00B	300	380/A/A
175/70R13	82T	5.00B	300	380/A/A
175/70R13	82H	5.00B	300	380/A/A
185/70R13 *	86T	5.50B	300	380/A/A
165/60R14 *	75H	5J	300	380/A/A
175/65R14	82H	5J	300	380/A/A
185/70R14	88H	5½J	300	380/A/A
195/70R14 *	91H	6J	300	380/A/A
205/60R14 *	88H	6J	300	380/A/A
175/50R15 *	75H	5½J	300	380/A/A
175/60R15 *	81H	5J	300	380/A/A
175/65R15 *	84H	5J	300	380/A/A
185/55R15	82V	6J	300	380/A/A
185/60R15	84H	5½J	300	380/A/A
185/65R15	88H	5½J	300	380/A/A
195/50R15	82V	6J	340	380/A/A
195/55R15	85V	6J	300	380/A/A
195/60R15	88H	6J	300	380/A/A
195/60R15	88V	6J	300	380/A/A
195/65R15	91H	6J	300	380/A/A
195/65R15	91V	6J	300	380/A/A
205/60R15 *	91V	6J	300	380/A/A
205/65R15 *	94H	6J	300	380/A/A

SIZE	L.I. & S.R.	STANDARD RIM (IN.)	PRESSURE (KPA)	UTQG
215/65R15 *	96H	6½J	300	380/A/A
185/55R16 *	83V	6J	300	380/A/A
195/45ZR16 *	84WXL	6½J	340	380/A/A
195/50R16	84H	6J	300	380/A/A
195/55R16	91VXL	6J	340	380/A/A
205/45ZR16 *	87WXL	7J	340	380/A/A
205/50ZR16 *	91WXL	6½J	340	380/A/A
205/55R16	91V	6½J	300	380/A/A
215/45ZR16 *	90WXL	7J	340	380/A/A
215/60R16	95H	6½J	300	380/A/A
235/60R16 *	100H	7J	300	380/A/A
205/40ZR17 *	84WXL	7½J	340	320/A/A
205/45ZR17	88WXL	7J	340	320/A/A
205/50ZR17	93WXL	6½J	340	320/A/A
215/40ZR17 *	87WXL	7½J	340	320/A/A
215/45ZR17	91WXL	7J	340	320/A/A
215/50ZR17	95WXL	7J	340	320/A/A
215/50ZR17	95WXL	7J	340	320/A/A
215/55ZR17	98WXL	7J	340	320/A/A
225/45ZR17	94WXL	7½J	340	320/A/A
225/50ZR17	98WXL	7J	340	320/A/A
245/45ZR18	100WXL	8J	340	320/A/A

\* means products under development.



# POWERGRIP

PERFORMANCE & SPORTY

**ALL-WEATHER PERFORMANCE**

**Advanced High Wet-grip, Low Rolling Resistance Tread Formula**

Provides higher rolling resistance and superior lubrication performance.

**Four Longitudinal Groove Patterns**

Wider main drainage grooves for safer high-speed wet road driving.

**PRECISE HANDLING**

**Asymmetric Tread Pattern and Outer Reinforced Rib Design**

Provides higher rolling resistance and superior lubrication performance.

**Ultra-High Strength Lightweight Belt Structure**

Ensures handling performance during high-speed driving.

**STRONGER GRIP**

**Optimized Anti-corrosion and Tyre Structure**

Maximizes tyre contact area, providing stronger grip

**NOISE REDUCTION**

**Air Turbulence Noise Reduction Technology**

Simulation software optimizes tread pattern and variable pitch arrangement, suppressing turbulent airflow generated during tyre movement, ensuring efficient noise reduction.

**Dynamic Tapered Surface Design at the Tread Block Ends**

Minimizes deformation upon contact with the road surface.

# POWERGRIP

PERFORMANCE & SPORTY



\*The UTQG for HIMOTION U01 is 320/A/A

SIZE	L.I. & S.R.	STANDARD RIM (IN.)	PRESSURE (KPA)
205/50R17 *	93WXL	6½J	340
205/55R17 *	95WXL	6½J	340
215/45R17	91WXL	7J	340
215/50R17	91V	7J	300
215/50R17	95WXL	7J	340
215/55R17	94V	7J	300
215/55R17	98WXL	7J	340
225/45R17	91V	7½J	300
225/45R17	94WXL	7½J	340
225/50R17	98VXL	7J	340
225/50R17	98WXL	7J	340
225/55R17	97V	7J	300
225/55R17	101WXL	7J	340
235/45R17	97WXL	8J	340
235/50R17 *	100WXL	7½J	340
235/55R17	103WXL	7½J	340
215/50R18 *	96WXL	7J	340
215/55R18	95V	7J	300
215/55R18	99VXL	7J	340
225/40R18	92VXL	8J	340
225/40R18	92WXL	8J	340
225/45R18	95VXL	7½J	340
225/45R18	95WXL	7½J	340
225/50R18 *	99WXL	7J	340
225/55R18	98V	7J	300
225/55R18	102VXL	7J	340
235/45R18	98VXL	8J	340
235/45R18	98WXL	8J	340
235/55R18	104WXL	7½J	340
235/50R18	101VXL	7½J	340
235/50R18	101WXL	7½J	340
235/55R18	104VXL	7½J	340

SIZE	L.I. & S.R.	STANDARD RIM (IN.)	PRESSURE (KPA)
235/55R18	104VXL	7½J	340
245/40R18 *	97WXL	8½J	340
245/40R18 *	97YXL	8½J	340
245/45R18	100VXL	8J	340
245/45R18	100WXL	8J	340
245/50R18 *	104WXL	7½J	340
255/40R18 *	99WXL	9J	340
255/55R18 *	109WXL	8J	340
225/45R19 *	96WXL	7½J	340
225/45R19 *	96YXL	7½J	340
225/55R19 *	103WXL	7J	340
235/40R19 *	96WXL	8½J	340
235/40R19 *	96YXL	8½J	340
235/45R19 *	99WXL	8J	340
235/45R19 *	99YXL	8J	340
235/50R19 *	103WXL	7½J	340
235/55R19 *	105WXL	7½J	340
245/35R19 *	93WXL	8½J	340
245/45R19 *	102YXL	8J	340
245/35R19 *	93YXL	8J	340
245/55R19 *	107WXL	7½J	340
255/35R19 *	96WXL	9J	340
255/35R19 *	96YXL	9J	340
255/45R19 *	104WXL	8½J	340
255/45R19 *	104YXL	8½J	340
255/50R19 *	107WXL	8J	340
285/40R19	103W	10J	340
285/40R19	107WXL	10J	340

\* means products under development.

# HIGHWAY URBAN SUV

## STABLE HANDLING

### Latest Modified Fifth-generation Formula

Tread-to-tread contact is tighter, improving stability and handling performance.

## STRONG GRIP

### Symmetric Tread Pattern and Gradual Groove Depth Design

The tread blocks have enhanced rigidity, providing excellent grip and braking performance.

## WEAR-RESISTANT & DURABLE

### Carcass uses Low Heat-generation Carbon Black and High-strength Polyester Fiber Materials

Improves tyre wear resistance and fatigue resistance, enhancing fuel economy

## WET ROAD SAFETY

### Wide Tread Grooves

Rapid water drainage, effectively preventing slipping on wet surfaces.



# HIGHWAY URBAN SUV

## URBAN SUV

SIZE	L.I. & S.R.	STANDARD RIM (IN.)	PRESSURE (KPA)	UTQG
215/70R16	100T	6½J	300	440/A/A
215/70R16	100H	6½J	300	440/A/A
225/70R16	103T	6½J	300	440/A/A
225/70R16	103H	6½J	300	440/A/A
235/70R16 *	106T	7J	300	440/A/A
235/70R16 *	106H	7J	300	440/A/A
245/70R16 *	107T	7J	300	440/A/A
245/70R16 *	111HXL	7J	300	440/A/A
255/70R16 *	111T	7½J	300	440/A/A
255/70R16 *	111H	7½J	300	440/A/A
265/70R16	112T	8J	300	440/A/A
265/70R16	112H	8J	300	440/A/A
275/70R16 *	114T	8J	300	440/A/A
275/70R16 *	114H	8J	300	440/A/A
215/60R17	96H	6½J	300	440/A/A
215/60R17	100HXL	6½J	340	440/A/A
215/65R17 *	99H	6½J	300	440/A/A
225/60R17	99H	6½J	300	440/A/A
225/60R17	103HXL	6½J	340	440/A/A
225/65R17	102H	6½J	300	440/A/A
225/65R17	106HXL	6½J	340	440/A/A
235/60R17 *	106HXL	7J	340	440/A/A
235/65R17	104H	7J	300	440/A/A

SIZE	L.I. & S.R.	STANDARD RIM (IN.)	PRESSURE (KPA)	UTQG
235/65R17	108HXL	7J	340	440/A/A
245/65R17 *	111HXL	7J	340	440/A/A
255/60R17 *	110HXL	7½J	340	440/A/A
265/65R17	112H	8J	300	440/A/A
265/65R17	116HXL	8J	340	440/A/A
265/70R17	115T	8J	300	440/A/A
265/70R17	115H	8J	300	440/A/A
275/65R17 *	115H	8J	300	440/A/A
285/65R17 *	116H	8½J	300	440/A/A
225/60R18 *	100H	6½J	300	440/A/A
225/60R18 *	104HXL	6½J	300	440/A/A
235/60R18	103H	7J	300	440/A/A
235/60R18	107HXL	7J	340	440/A/A
235/65R18 *	110HXL	7J	340	440/A/A
245/60R18 *	105HXL	7J	340	440/A/A
255/60R18 *	112HXL	7½J	340	440/A/A
255/70R18 *	113H	7½J	300	440/A/A
265/60R18	110H	8J	300	440/A/A
265/70R18 *	116H	8J	300	440/A/A
275/65R18 *	116H	8J	300	440/A/A
285/60R18 *	116H	8½J	300	440/A/A
275/60R20 *	116VXL	8J	340	440/A/A
285/50R20	116VXL	9J	340	440/A/A

\* means products under development.

# SPECTRA

## MULTI-PURPOSE CARGO

### MULTI-PURPOSE CARGO

**LONGER MILEAGE**

**Specialized Tread Formula Design and Imported Ultra-fine Carbon Black**

Significantly enhances tyre wear resistance and safety, reduces rolling resistance, and greatly extends tyre lifespan.

**ENHANCED DURABILITY**

**Central RIB Reinforcement Design**

Provides superior wear resistance.

**STABLE HANDLING**

**Continuous Shoulder Tread Block Design**

Ensures excellent driving stability and handling performance under continuous driving conditions, fully guaranteeing driving safety.

**HIGH LOAD CAPACITY**

**Uniform Contact Pressure Design**

Optimizes tread design through simulation, reducing shoulder deformation and uneven shoulder wear.

**HIGHWAY**  
**URBAN SUV**



SIZE	L.I. & S.R.	STANDARD RIM (IN.)	PRESSURE (KPA)
185R14C	102/100Q	5½J	450
195R14C	106/104N	5½J	450
195R14C	106/104Q	5½J	450
195R15C	106/104N	5½J	450
195R15C	106/104R	5½J	450
195/70R15C *	104/102R	6J	450
205/70R15C *	106/104R	6J	450
215/70R15C *	109/107R	6½J	450
225/70R15C	112/110R	6½J	450
185/75R16C *	104/102R	5J	475
195/75R16C *	107/105R	5½J	475
205/65R16C *	107/105R	6J	475
205/75R16C *	113/111R	5½J	525
215/65R16C *	109/107R	6½J	475
215/75R16C *	116/114R	6J	525
225/65R16C	112/110R	6½J	475
225/75R16C	121/120R	6J	575
235/65R16C	115/113R	7J	475

\* means products under development.



# Truck & Bus Bias & Radial tyres



**POWERBULL**  
10.00-20 | RIB



**POWERBULL**  
10.00-20 | LUG

Size	Ply Rating	Type	RIM Size	Pattern	CAT	NSD
10.00-20	18	TT	7.5	RIB	CV	19.3 mm
10.00-20	18	TT	7.5	LUG	CV	22.5 mm

## Light Commercial Vehicle Tyres



**POWERBULL**  
8.25-16 | LUG



**POWERBULL**  
8.25-16 | RIB

Size	Ply Rating	Type	RIM Size	Pattern	CAT	NSD
7.00-15	12	TT	5.5 F	LUG	LCV	17 mm
7.50-16	16	TT	6.00 G	RIB	LCV	15 mm
7.50-16	16	TT	6.00 G	LUG	LCV	19 mm
8.25-16	16	TT	6.5	RIB	LCV	15.5 mm
8.25-16	16	TT	6.5	LUG	LCV	19 mm

## OTR Tyres (Mining | Tractor)



**SUPER HAWK**  
10.00-20 | LUG



**SUPER HAWK**  
11.00-20 | LUG



**TRACK GRIP**  
9.00-16 | LUG

Pattern Name	Size	Ply Rating	Type	RIM Size	NSD	CAT
Super Hawk	10.00-20	18	TT	7.5	22 mm	CV/OTR
Super Hawk	11.00-20	18	TT	8	23 mm	CV/OTR
Track Grip	9.00-16	18	TT	6.00 T	Unknown	Tractor/Trailer

TB TYRES



# TBR TYRES



**S399**

SIZE	PR	LOAD INDEX	SPEED INDEX	LOAD CAPACITY (Single/Dual)	PRESSURE KPA	STANDARD RIM (INCH)	SECTION WIDTH MM	OVERALL DIAMETER MM	TREAD DEPTH MM
12.00R20	20	156/153	4000/3650	K	900	8.5	315	1125	16.5
11.00R20	18	152/149	3550/3250	K	930	8.0	293	1085	16.0
10.00R20	18	149/146	3250/3000	K	930	7.5	278	1054	15.5
9.00R20	16	144/142	2800/2650	K	900	7.0	259	1019	15.0
8.25R20	16	139/137	2430/2300	K	930	6.5	236	974	14.5
8.25R16LT	16	128/124	1800/1600	K	770	6.50H	235	855	13.5
7.50R16LT	16	125/121	1650/1450	K	870	6.00G	215	805	13.0
7.00R16LT	14	118/114	1320/1180	K	770	5.50F	200	775	12.0



SIZE	PR	LOAD INDEX	LOAD CAPACITY (Single/Dual)	SPEED INDEX	PRESSURE KPA	STANDARD RIM (INCH)	SECTION WIDTH MM	TREAD DEPTH MM
315/80R22.5	20	157/154	4125/3750	K	900	9.00	312	16.5
11R22.5	18	149/146	3250/3000	K	930	8.25	279	14.5
12.00R20	20	156/153	4000/3650	K	900	8.5	315	16.5
11.00R20	18	152/149	3550/3250	K	930	8.0	293	16.0
10.00R20	18	149/146	3250/3000	K	930	7.5	278	15.5
9.00R20	16	144/142	2800/2650	K	900	7.0	259	15.0
8.25R20	16	139/137	2430/2300	K	930	6.5	236	13.5
8.25R16LT	16	128/124	1800/1600	K	770	6.50H	235	13.0
7.50R16LT	16	125/121	1650/1450	K	870	6.00G	215	12.0
7.00R16LT	14	118/114	1320/1180	K	770	5.50F	200	12.0
6.50R16LT	12	110/105	1060/925	K	670	5.50F	185	11.5



**S159**



**S239**

SIZE	PR	LOAD INDEX	LOAD CAPACITY (Single/Dual)	SPEED INDEX	PRESSURE KPA	STANDARD RIM (INCH)	SECTION WIDTH MM	TREAD DEPTH MM
7.50R16LT	16	125/121	1650/1450	K	870	6.00G	215	13.0
7.00R16LT	14	118/114	1320/1180	K	770	5.50F	200	12.5

SIZE	PR	LOAD INDEX	LOAD CAPACITY (Single/Dual)	SPEED INDEX	PRESSURE KPA	STANDARD RIM (INCH)	SECTION WIDTH MM	TREAD DEPTH MM
12.00R20	20	156/153	4000/3650	D	900	8.5	315	25.0
11.00R20	18	152/149	3550/3250	D	930	8.0	293	24.0
10.00R20	18	149/146	3250/3000	D	930	7.5	278	23.0
9.00R20	16	144/142	2800/2650	D	900	7.0	259	22.0
8.25R20	16	139/137	2430/2300	D	930	6.5	236	21.5
8.25R16LT	16	128/124	1800/1600	D	770	6.50H	235	20.5
7.50R16LT	16	125/121	1650/1450	D	870	6.00G	215	20.0



**S139**



**S169**

SIZE	PR	LOAD INDEX	LOAD CAPACITY (Single/Dual)	SPEED INDEX	PRESSURE KPA	STANDARD RIM (INCH)	SECTION WIDTH MM	TREAD DEPTH MM
13R22.5	18	154/151	3750/3450	K	830	9.75	320	18.5
12.00R20	20	156/153	4000/3650	K	900	8.5	315	19.0
11.00R20	18	152/149	3550/3250	K	930	8.0	293	19.0
10.00R20	18	149/146	3250/3000	K	930	7.5	278	18.5
9.00R20	16	144/142	2800/2650	K	900	7.0	259	18.0
8.25R20	16	139/137	2430/2300	K	930	6.5	236	16.0
8.25R16LT	16	128/124	1800/1600	K	770	6.50H	235	14.5
7.50R16LT	16	125/121	1650/1450	K	870	6.00G	215	14.5
7.00R16LT	14	118/114	1320/1180	K	770	6.50H	235	14.0
6.50R16LT	12	110/105	1600/925	K	670	5.50F	185	13.5



SIZE	PR	LOAD INDEX	LOAD CAPACITY (Single/Dual)	SPEED INDEX	PRESSURE KPA	STANDARD RIM (INCH)	SECTION WIDTH MM	TREAD DEPTH MM
10.00R20	18	149/146	3250/3000	F	930	7.5	278	20.5
9.00R20	16	144/142	2800/2650	F	900	7.0	259	18.0



**S289**

SIZE	PR	LOAD INDEX	LOAD CAPACITY (Single/Dual)	SPEED INDEX	PRESSURE KPA	STANDARD RIM (INCH)	SECTION WIDTH MM	TREAD DEPTH MM
315/80R22.5	20	157/154	4125/3750	M	900	9.00	312	14.5
325/95R24	22	162/160	4750/4500	K	850	9.00	325	16.0
12R22.5	18	152/149	3550/3250	K	930	9.00	300	14.5
12.00R24	20	160/157	4500/4125	K	900	9.00	315	16.0



**FS622**



**FS656**

SIZE	PR	LOAD INDEX	LOAD CAPACITY (Single/Dual)	SPEED INDEX	PRESSURE KPA	STANDARD RIM (INCH)	SECTION WIDTH MM	TREAD DEPTH MM
295/80R22.5	18	152/149	3550/3250	L	900	9.00	298	15.0



**S839**

SIZE	PR	LOAD INDEX	LOAD CAPACITY (Single/Dual)	SPEED INDEX	PRESSURE KPA	STANDARD RIM (INCH)	SECTION WIDTH MM	TREAD DEPTH MM
295/80R22.5	18	152/149	3550/3250	L	900	9.00	298	18.0
315/80R22.5	20	157/154	4125/3750	K	900	9.00	312	18.0



SIZE	PR	LOAD INDEX	LOAD CAPACITY (Single/Dual)	SPEED INDEX	PRESSURE KPA	STANDARD RIM (INCH)	SECTION WIDTH MM	TREAD DEPTH MM
315/80R22.5	20	157/154	4125/3750	M	900	9.00	312	14.5
295/80R22.5	18	152/149	3550/3250	M	900	9.00	298	14.5

**FS626**



**FS628**

SIZE	PR	LOAD INDEX	LOAD CAPACITY (Single/Dual)	SPEED INDEX	PRESSURE KPA	STANDARD RIM (INCH)	SECTION WIDTH MM	TREAD DEPTH MM
315/80R22.5	20	157/154	4125/3750	M	900	9.00	312	14.5



SIZE	PR	LOAD INDEX	LOAD CAPACITY (Single/Dual)	SPEED INDEX	PRESSURE KPA	STANDARD RIM (INCH)	SECTION WIDTH MM	TREAD DEPTH MM
315/70R22.5	20	154/151	3750/3450	L	930	9.00	312	20.0

**FS666**



**FS658**

SIZE	PR	LOAD INDEX	LOAD CAPACITY (Single/Dual)	SPEED INDEX	PRESSURE KPA	STANDARD RIM (INCH)	SECTION WIDTH MM	TREAD DEPTH MM
265/70R19.5	18	143/141	2725/2575	J	860	7.50	262	13.0
295/75R22.5	16	146/143	3000/2725	M	830	9.00	286	15.0
315/70R22.5	20	154/151	3750/3450	L	930	9.00	312	15.0
9.5R17.5	18	143/141	2725/2575	J	875	6.75	240	13.5

SIZE	PR	LOAD INDEX	LOAD CAPACITY (Single/Dual)	SPEED INDEX	PRESSURE KPA	STANDARD RIM (INCH)	SECTION WIDTH MM	TREAD DEPTH MM
385/65R22.5	22	162	4750	K	900	11.75	389	16.0



**S969**



**S729**

SIZE	PR	LOAD INDEX	LOAD CAPACITY (Single/Dual)	SPEED INDEX	PRESSURE KPA	STANDARD RIM (INCH)	SECTION WIDTH MM	TREAD DEPTH MM
315/80R22.5	20	157/154	4125/3750	L	900	9.00	312	17.0
295/80R22.5	18	152/149	3550/3250	L	900	9.0	298	16.5
12.00R20	20	156/153	4000/3650	K	900	8.5	315	17.0
11.00R20	18	152/149	3550/3250	K	930	8.0	293	17.0
10.00R20	18	149/146	3200/3000	K	930	7.5	278	16.5
9.00R20	16	144/142	2800/2650	K	900	7.0	259	16.0

SIZE	PR	LOAD INDEX	LOAD CAPACITY (Single/Dual)	SPEED INDEX	PRESSURE KPA	STANDARD RIM (INCH)	SECTION WIDTH MM	TREAD DEPTH MM
13R22.5	18	154/151	3750/3450	L	830	9.75	320	17.5
12R22.5	18	152/149	3550/3250	L	930	9.0	300	17.5
295/80R22.5	18	152/149	3550/3250	L	900	9.00	298	16.5
315/80R22.5	20	157/154	4125/3750	L	900	9.00	312	17.0
12.00R20	20	156/153	4000/3650	K	900	8.5	315	16.5
11.00R20	18	152/149	3550/3250	K	930	8.0	293	16.5
10.00R20	18	149/149	3250/3000	K	930	8.0	293	16.5
9.00R20	16	144/142	2800/2650	K	900	7.0	259	16.0



**S199**



**S769**

SIZE	PR	LOAD INDEX	LOAD CAPACITY (Single/Dual)	SPEED INDEX	PRESSURE KPA	STANDARD RIM (INCH)	SECTION WIDTH MM	TREAD DEPTH MM
295/80R22.5	18	152/149	3550/3250	L	900	9.00	298	21.5
315/80R22.5	20	157/154	4125/3750	L	900	9.00	312	21.5



SIZE	PR	LOAD INDEX	LOAD CAPACITY (Single/Dual)	SPEED INDEX	PRESSURE KPA	STANDARD RIM (INCH)	SECTION WIDTH MM	TREAD DEPTH MM
13R22.5	18	154/151	3750/3450	K	830	9.75	320	18.5
12.00R20	20	156/153	4000/3650	K	900	8.5	315	19.0
11.00R20	18	152/149	3550/3250	K	930	8.0	293	19.0
10.00R20	18	149/146	3250/3000	K	930	7.5	278	18.5
9.00R20	16	144/142	2800/2650	K	900	7.0	259	18.0
8.25R20	16	139/137	2430/2300	K	930	6.5	236	16.0
8.25R16LT	16	128/124	1800/1600	K	770	6.50H	235	14.5
7.50R16LT	16	125/121	1650/1450	K	870	6.00G	215	14.5
7.00R16LT	14	118/114	1320/1180	K	770	5.50F	200	14.0
6.50R16LT	12	110/105	1060/925	K	670	5.50F	185	13.5



**S169**



**S339**

SIZE	PR	LOAD INDEX	LOAD CAPACITY (Single/Dual)	SPEED INDEX	PRESSURE KPA	STANDARD RIM (INCH)	SECTION WIDTH MM	TREAD DEPTH MM
12R22.5	18	152/149	3550/3250	K	930	9.00	300	18.0
12.00R20	20	156/153	4000/3650	K	900	8.5	315	18.0
11.00R20	18	142/149	3550/3250	K	930	8.0	315	18.0
10.00R20	18	149/146	3250/3000	K	930	7.5	278	17.0
9.00R20	16	144/142	2800/2650	K	900	7.0	259	16



**Off-the-Road  
Vehicle Tyres**

# Machinery



Dozer



Loader



Grader



<b>NAME</b>	Earth Haul
<b>SIZE</b>	12.5/80-18
<b>PR</b>	16
<b>TYPE</b>	TT & TL
<b>RIM SIZE</b>	18



# Machinery



Grader



<b>NAME</b>	Gradex
<b>SIZE</b>	13.00-24 14.00-24
	14 , 16
<b>TYPE</b>	TT & TL
<b>RIM SIZE</b>	24



# Machinery



<b>NAME</b>	GRADEX PLUS
<b>SIZE</b>	17.5-25
<b>PR</b>	16
<b>TYPE</b>	TT & TL
<b>RIM SIZE</b>	25



# Machinery



Harvester



Tractor



<b>NAME</b>	GEO FORCE PLUS
<b>SIZE</b>	16.9-28 14.9-28
<b>PR</b>	14
<b>TYPE</b>	TT & TL
<b>RIM SIZE</b>	28



# Machinery



Harvester



Tractor



<b>NAME</b>	FIELD BULL
<b>SIZE</b>	9.5-24
<b>PR</b>	8
<b>TYPE</b>	TT & TL
<b>RIM SIZE</b>	24



# Machinery

Harvester



Tractor



**NAME**

GEO FORCE

**SIZE**

13.6-28  
14.9-28

**PR**

14

**TYPE**

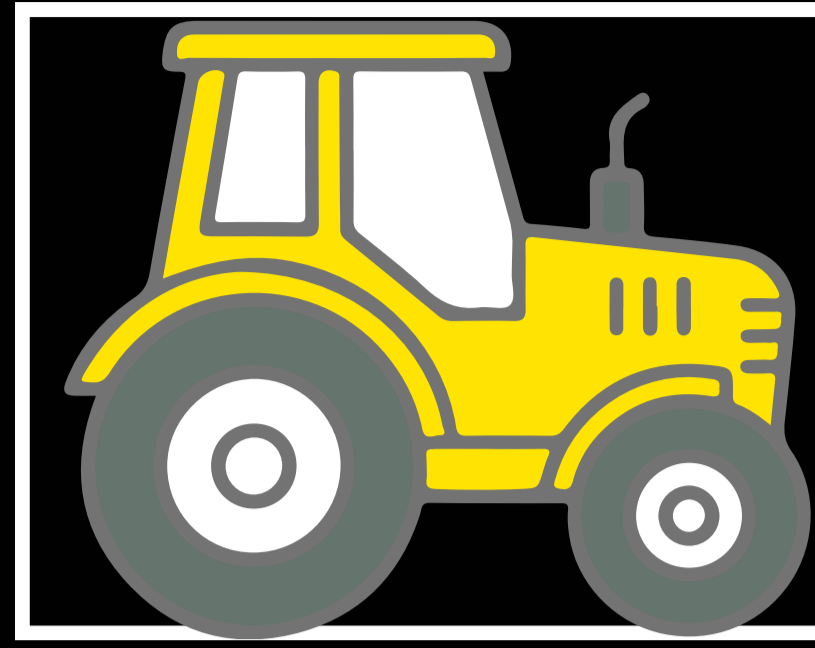
TT & TL

**RIM SIZE**

28



# Machinery



**2WD  
Tractor**



<b>NAME</b>	FIELD KING
<b>SIZE</b>	6.00-16
<b>PR</b>	10
<b>TYPE</b>	TT & TL
<b>RIM SIZE</b>	16



# Machinery



**2WD  
Tractor**



NAME	AGRO GRIP
SIZE	6.00-16 6.50-16 7.00-16 7.50-16
PR	14
TYPE	TT & TL
RIM SIZE	28





# 2W & 3W VEHICLE TYRES



# SANDY

- Tyre designed to provide a comfortable and stable ride.
- Puncture resistance with good shock absorption.

Tyre Size	PR	PATTERN NAME	TT/TL
3.50-10	4	SANDY	TT
3.50-10	6	SANDY	TT



# PAWAN

- Excellent traction in off-road conditions.
- Highly durable for all-terrain applications.
- Good dry & wet traction.

Tyre Size

PR

PATTERN NAME

TT/TL

3.50-10

4

PAWAN

TT

3.50-10

6

PAWAN

TT



# COBRA

- Excellent traction in off-road conditions.
- Highly durable for all-terrain applications.
- Good dry & wet traction.

Tyre Size	PR	PATTERN NAME	TT/TL
90/90-12	6	COBRA	TT

\*Contact sales for the full product range



**Dunlop is Dunlop, Always Ahead**



[contact@dunloptyres.co.in](mailto:contact@dunloptyres.co.in)



+91 7044074250